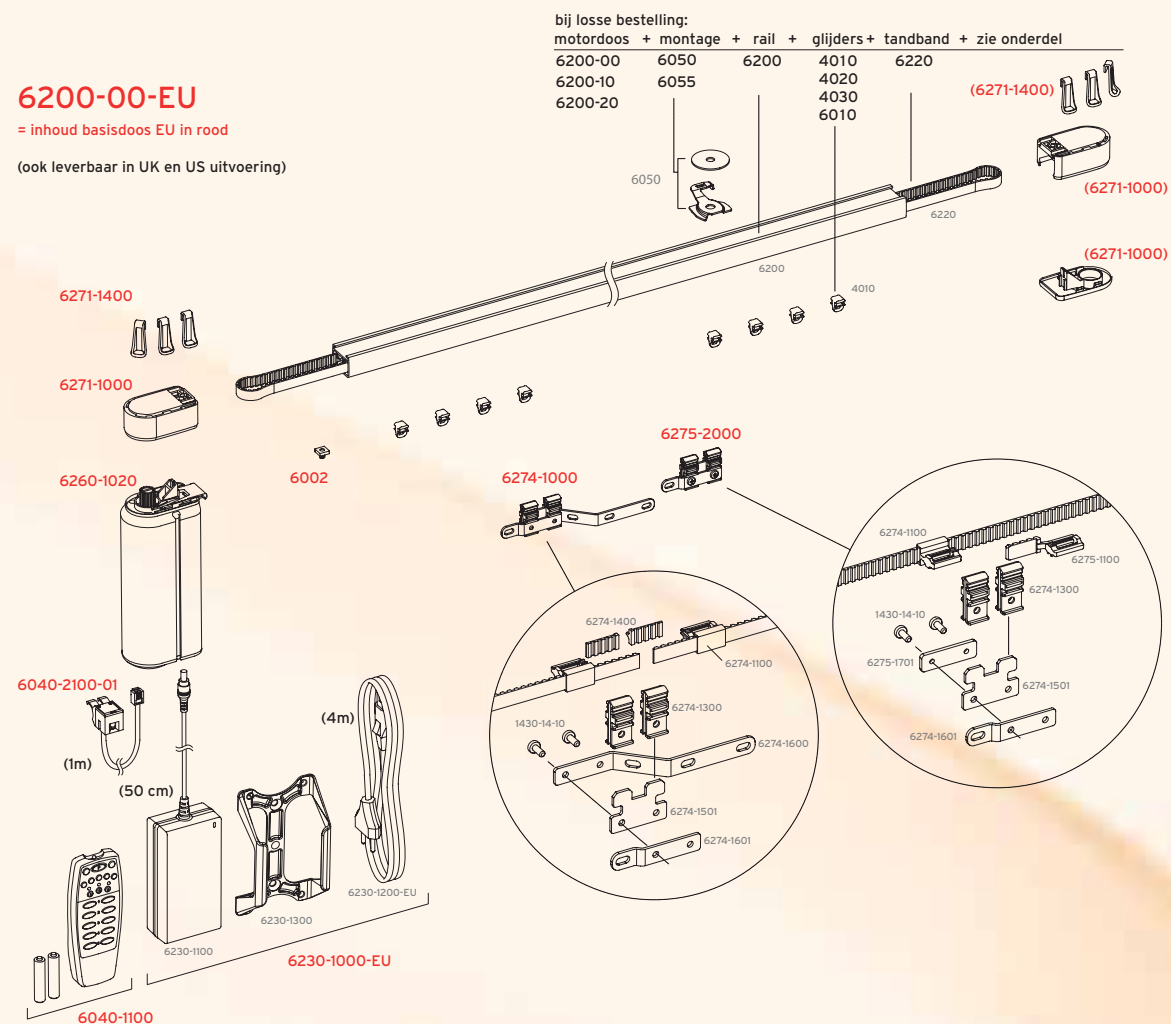


## Exploded View

### 6200-00-EU

= inhoud basisdoos EU in rood

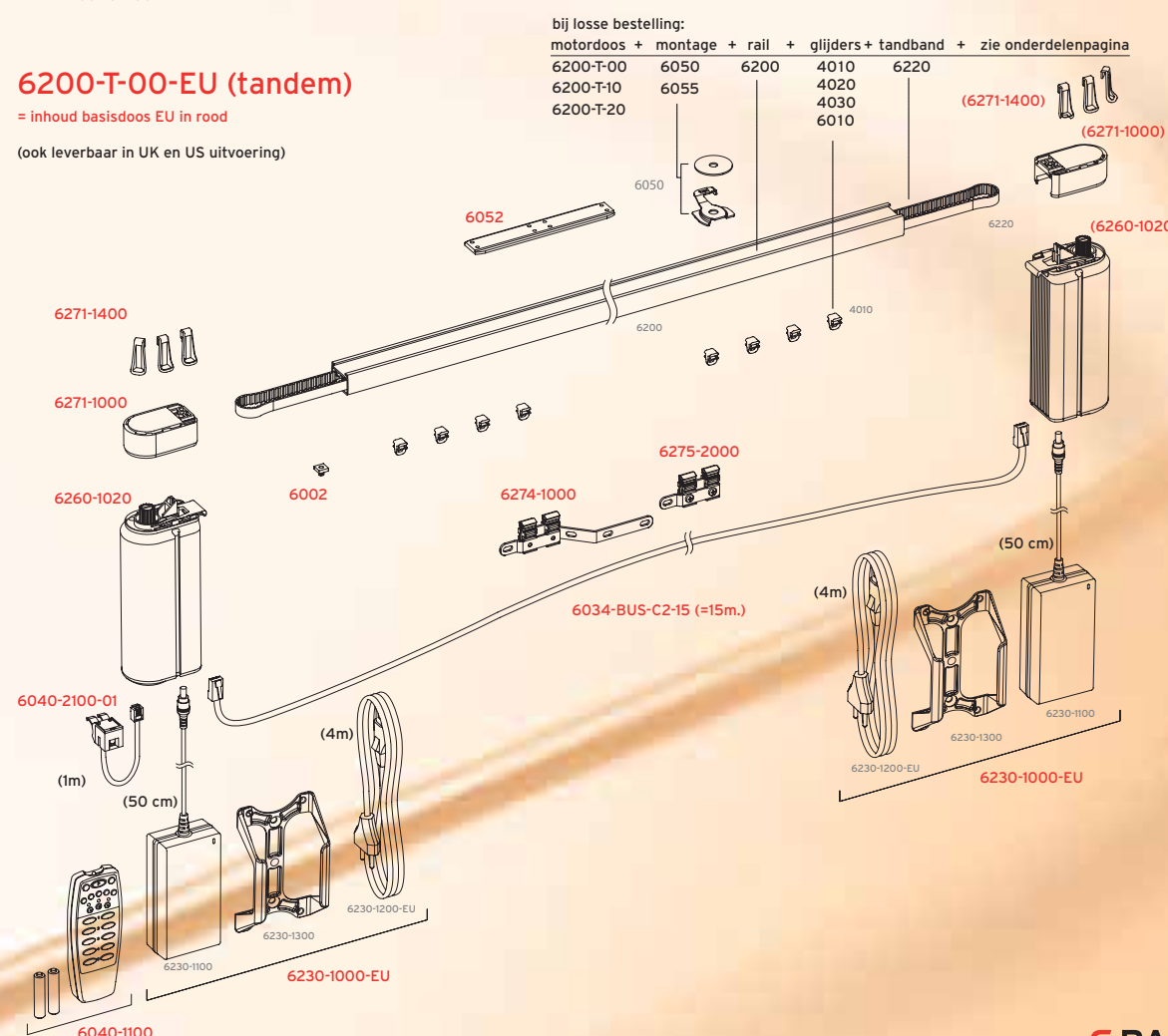
(ook leverbaar in UK en US uitvoering)



### 6200-T-00-EU (tandem)

= inhoud basisdoos EU in rood

(ook leverbaar in UK en US uitvoering)



# 6200

**ELECTRIC CURTAIN RAIL**  
# 6200



**GOELST**  
INTERIOR PRODUCTS

## Components

Product design and specification changes reserved.

When ordering components for self assembly\*:  
- Select Motor set :  
- Profile 6200  
- Drive belt 6220  
- Component parts: see Curtain Transport, Fixing and Accessories sections below.

◀ **6200-00**  
Basic set for systems with single motor, including infrared control (see exploded view)  
Tandem set: **6200-T-00**

**6200-10**  
Motor set with single motor, excluding infrared controls  
Incl. switch 6048-1001-03  
Tandem set: **6200-T-10**

**6200-20**  
Motor set with single motor, excluding controls: Select controls from the "Connect and Control" brochure.  
Tandem set: **6200-T-20**

\*) When ordering complete assembled systems please use our ordering form.

	<p><b>6200</b> <sup>ⓓ</sup> aluminium profile colours: NM - W</p>		<p><b>6155</b> suspension hanger for 6200 incl. rail adapter 6159-10 colours: B - G - N - W</p> <p><b>6159-10</b> Strut hanger - used to provide lateral stability for cubicle curtain rail installations. for a complete hanger order: <b>4064-10</b> base plate colours: GR - W <b>4064-40</b> hanger tube colours: GR - W <b>4064-30W-62</b> fixing set for 6200, including ceiling rose (22 mm) for use with suspended ceilings colours: W</p>												
	<p><b>6220</b> drive belt (10 mm)</p>	<b>WALL FIXING</b>													
	<p><b>4010</b> <sup>ⓓ</sup> glider (on strip) colours: B - G - W - ZW</p>		<p><b>6057</b> <sup>ⓓ</sup> adaptable wall bracket 7 cm - 15 cm colours: NM - W</p>												
	<p><b>4020</b> Heavy duty glider colours: W - ZW</p>		<p><b>6051</b> <sup>ⓓ</sup> wall support - 4 cm projection colours: B - GR - W - ZW</p>												
	<p><b>4030</b> roller colours: B - G - W - ZW</p>	<b>ACCESSORIES</b>													
	<p><b>6010</b> <sup>ⓓ</sup> projection glider colours: W</p> <table border="1" style="font-size: small;"> <thead> <tr> <th>bends</th> <th>max curtain weight</th> <th>No. 6010 /m rail</th> </tr> </thead> <tbody> <tr> <td>0</td> <td>35 kg</td> <td>10</td> </tr> <tr> <td>1</td> <td>25 kg</td> <td>12</td> </tr> <tr> <td>2</td> <td>20 kg</td> <td>12</td> </tr> </tbody> </table>	bends	max curtain weight	No. 6010 /m rail	0	35 kg	10	1	25 kg	12	2	20 kg	12		<p>Components for single track with more than one pair of curtains</p> <p><b>6274-2000</b> <b>6275-2000</b> overlap carrier for additional pairs of curtains on single track</p> <p>additional pair of curtain</p> <p><b>6275-2000</b> overlap carrier in combination with 6274-2000 for additional pairs of curtains on single track</p>
bends	max curtain weight	No. 6010 /m rail													
0	35 kg	10													
1	25 kg	12													
2	20 kg	12													
	<p><b>2024-55</b> sew in hook 55 mm <b>2024-95</b> sew in hook 95 mm</p>	<b>CEILING FIXING</b>													
	<p><b>6050</b> ceiling fixing clamp, incl. washer 6050-1049 total curtain weight &lt; 25 kg</p>	<b>6059</b> wall return set (L&R) 15 cm, for wall and ceiling mounting - can be trimmed (minimum 9 cm) colours: W													
	<p><b>6055-1000</b> ceiling fixing plate total curtain weight &lt; 100 kg colours: N - W</p> <p>fixing: turn and lock</p>	<b>6052</b> internal connecting bridge - standard with tandem systems													
	<p><b>6055-2000-35</b> <b>6055-2000-45</b> profile insert for recessed fixing, incl. special screw - pre-drilling 6200 profile by Goelst / G-Rail</p> <p>35mm 45mm</p>	<b>6280-PRS</b> <sup>ⓓ</sup> Pilot Release System 6280-PRS See PRS brochure for options													
<b>CONTROL OPTIONS</b>															
<p>The extensive range of control options are featured in our 'Control' brochure. Alternative control options are available on request.</p>															

**ELECTRIC CURTAIN RAIL**  
# 6200

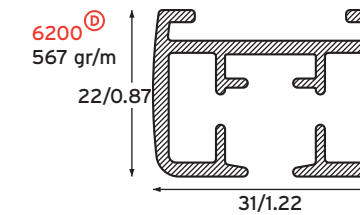
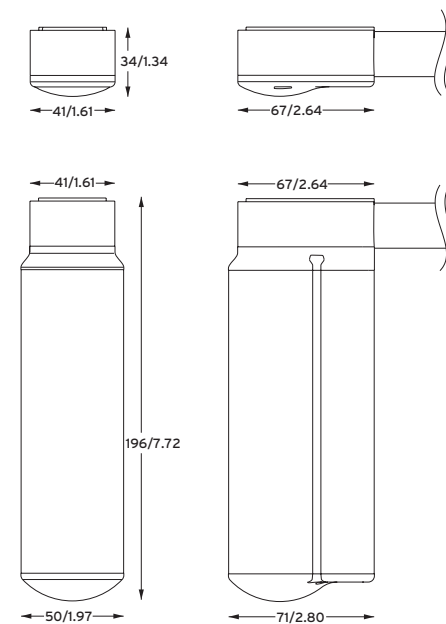
B = Brown  
G = Gold  
GR = Grey  
N = Natural  
NM = Natural metallic  
W = White  
ZW = Black

◻ = standard item  
ⓓ = registered design  
Ⓟ = patented design



**G-Rail 6200 is a powerful low voltage (24V) electrically operated curtain track system** that is delivered complete ready assembled with infrared remote control as standard. Suitable for both 110 and 240 Volt supply, system 6200 can be installed without the need of an electrician. Setting the end of travel positions is easily carried out using the infrared transmitter supplied. Now further advanced with integrated G-Rail 'CAN-BUS' intelligence the elegant design and simplicity to combine systems ensure 6200 is suitable for the most demanding interior applications

**Standard colours:** White RAL 9010, Natural Metallic RAL 9006.  
Special colours available on request.



### Specification Guide

#### Special Qualities

- > Silent Operation;
- > System suitable for all curtain weights and applications;
- > Strong motor with low system resistance;
- > Delivered pre-wired for simple 24-volt installation,
- > Easy control and setting of the system using infrared remote control;
- > In-built repeat timer function;
- > up to 5 intermediate positions programmable;
- > Colour co-ordinated components;
- > Standard travel speed set at 15 cm/sec (6"/sec);
- > Variable speed motor facility, launching/docking speeds and distances pre-programmed by Goelst or approved distributor;
- > Standard IR control, optional momentary switch (code 6048-1001) RF (radio frequency) is also available;
- > Integrated G-Rail 'CAN-BUS' system, allows group / individual control of G-Rail electric curtain tracks;
- > Compatible with most existing BUS systems;
- > Optional 6280-PRS Pilot Release system, allows curtains to be operated by hand in the event of emergency, power failure and/or product unfamiliarity;
- > The motor unit features RS232 technology;
- > Smart control buttons on motor unit.

#### Materials:

Aluminium EN AW-6060 T66 (higher specification than DIN 1725). Shape and size tolerances are in accordance with DIN 17615. White RAL 9010 or Natural Metallic 9006 powder coated in accordance with the Qualicoat standard. Profile weight: 567 gr per linear metre / 0.38 lbs per foot.



### Load table 6200

curvature	Glider	1 motor	Tandem	10 Tandem
		< 39 ft	< 39 ft	39 to 59 ft
straight	4010, 4020, 4030	max. 132 lbs	max. 220 lbs	max. 176 lbs
	6010	max. 88 lbs	max. 132 lbs	-
1 curve or multiple curves ≤ 90° in total	4010, 4020, 4030	max. 110 lbs	max. 198 lbs	max. 154 lbs
	6010	max. 66 lbs	max. 110 lbs	-
2 curves, or large curves ≤ 180° in total	4010, 4020, 4030	max. 88 lbs	max. 176 lbs	max. 132 lbs
	6010	max. 44 lbs	max. 88 lbs	-

Tandem = two motor units driving a single track. Ensure enough clearance between the moving curtain and the track, the floor and/or walls. Weights given are based on tracks being installed horizontally - for sloping installations or for systems longer than given in the load table - please inquire.

Maximum loads: per glider 4010 : 6.6 lbs  
 per glider 4020 : 17.6 lbs  
 per roller 4030 : 3.3 lbs  
 per glider 6010 : 1.1 lbs  
 For curved systems - allow a minimum of 12 gliders ref: 6010 per metre (4 gliders ref: 6010 per ft)

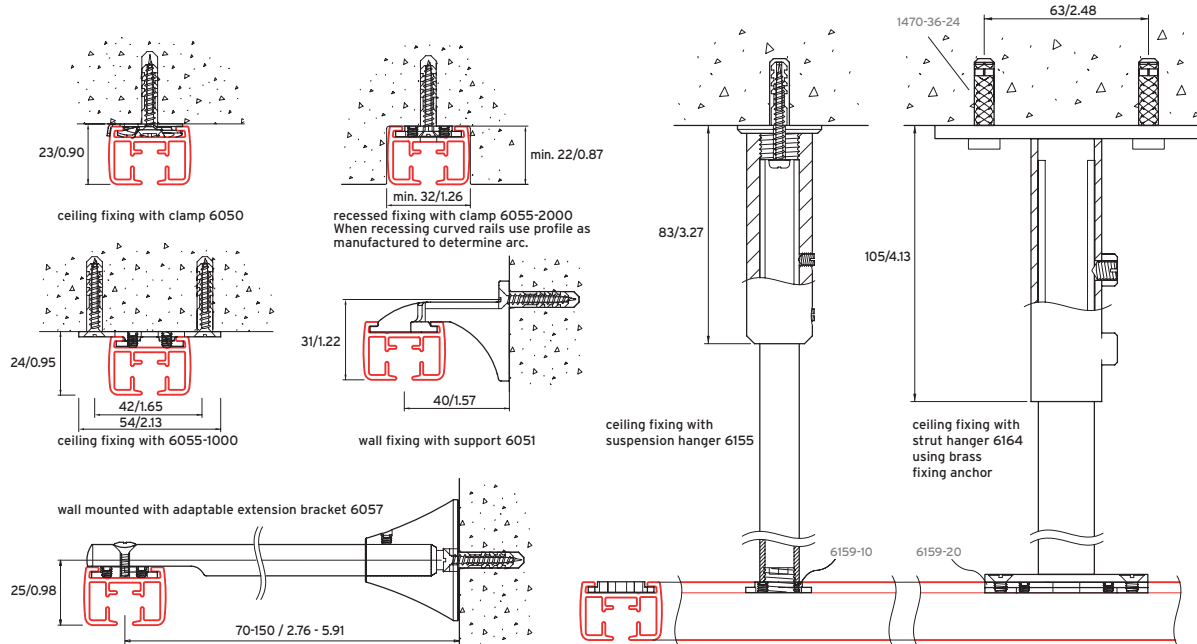
# 6200<sup>®</sup> > Advanced technical engineering and design.

**ELECTRIC CURTAIN RAIL**  
# 6200



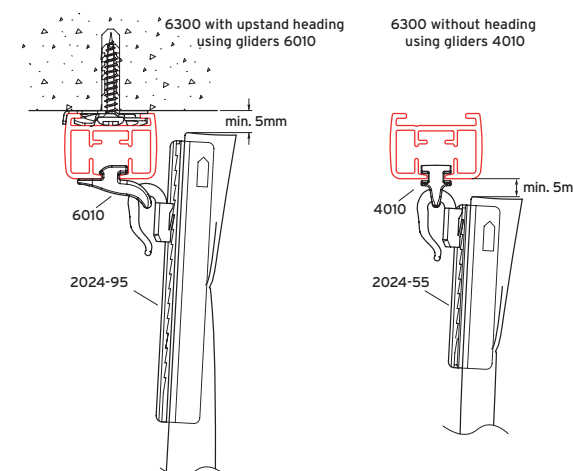
### Installation

drawing dimensions are given in mm / inch



### Curtain hanging examples

Maintain operating clearance between curtain and ceiling or curtain and profile.



### Accessories:

Assembled with 10-16 gliders 4010 per metre (3 to 5 per foot). Maximum weight per glider 4010: 3 kg/ 6.6 lbs. Maximum weight per 1,5 kg/ 3.3 lbs.. Standard maximum curtain weight: 100 kg/ 220 lbs. Upstand headings can be achieved using projection glider 6010 (the glider should not run over a join in the rail).

### Installation:

General advice for installation: an extra bracket should be installed at the curtain stacking positions.  
 Ceiling fixing with bracket 6050: fixing centres 60-80 cm / 23.6"-31.5". Maximum total curtain weight with brackets 6050: 25 kg/ 55 lbs.  
 Ceiling fixing with bracket 6055-1000 for heavy curtains up to 100 kg/ 220 lbs and with special curves, fixing centres 60-80 cm / 23.6"-31.5".  
 Wall fixing with bracket 6051 (projection cm / 1.58")  
 Wall fixing with adjustable bracket 6057 (projection 7-15 cm). Weight per bracket 6057 up to maximum 10 kg, depending on fixing surface.

### Bending:

Radius 20 cm, 30 cm (bending machine 1015) or greater than 1 m.

### Maintenance:

General advice: at least once a year lubrication with G-Rail siliconspray (1251-250).

